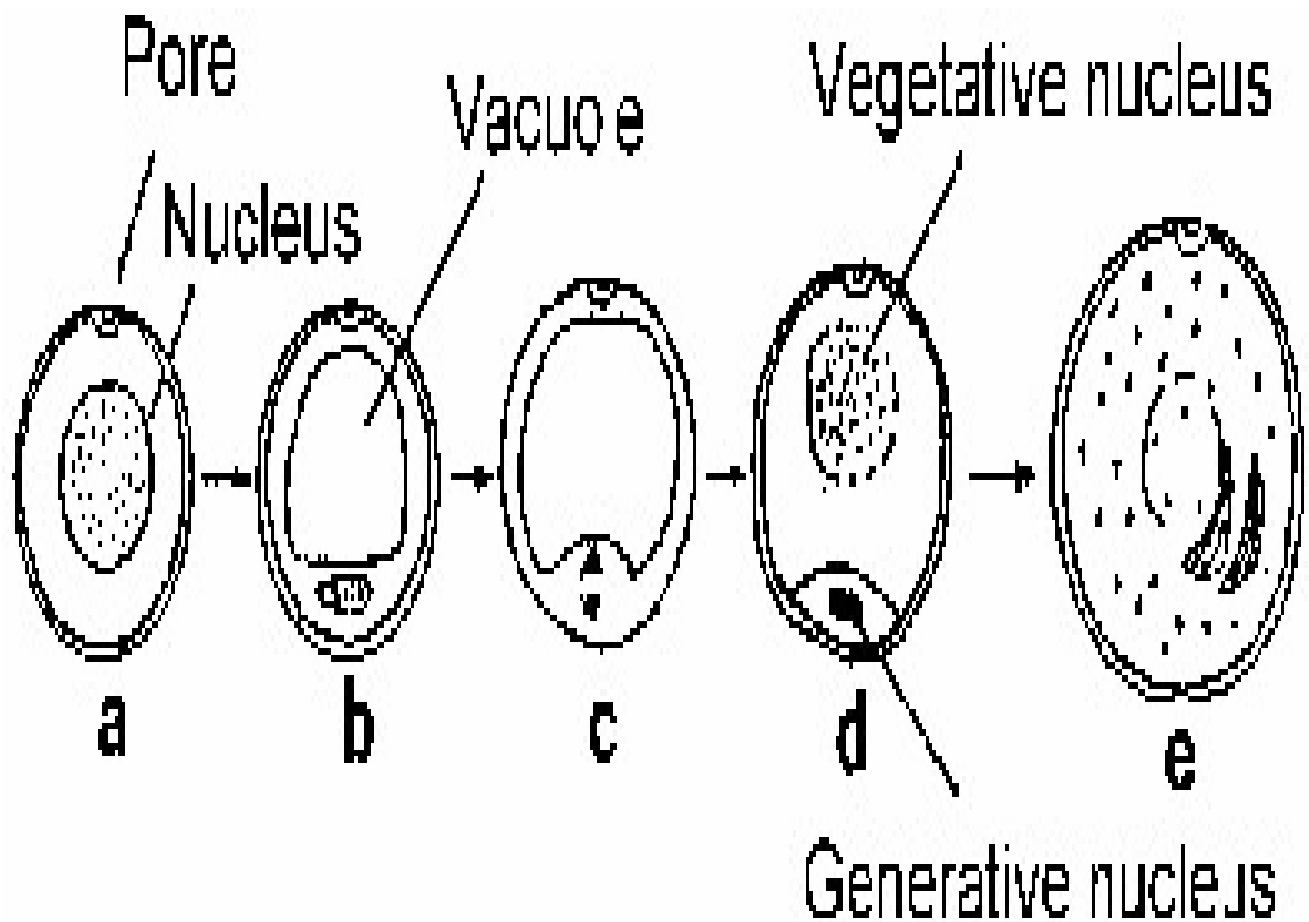
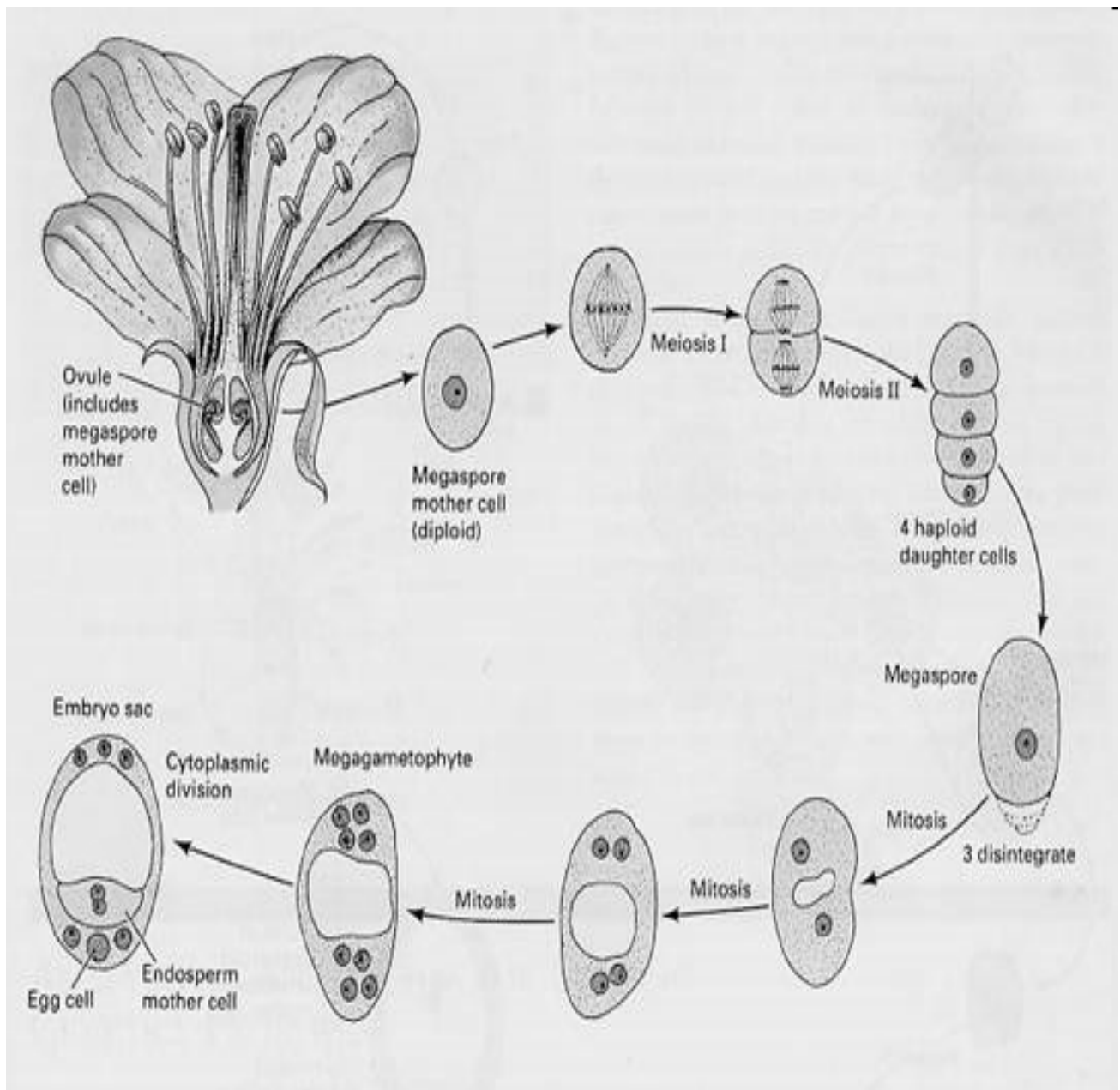


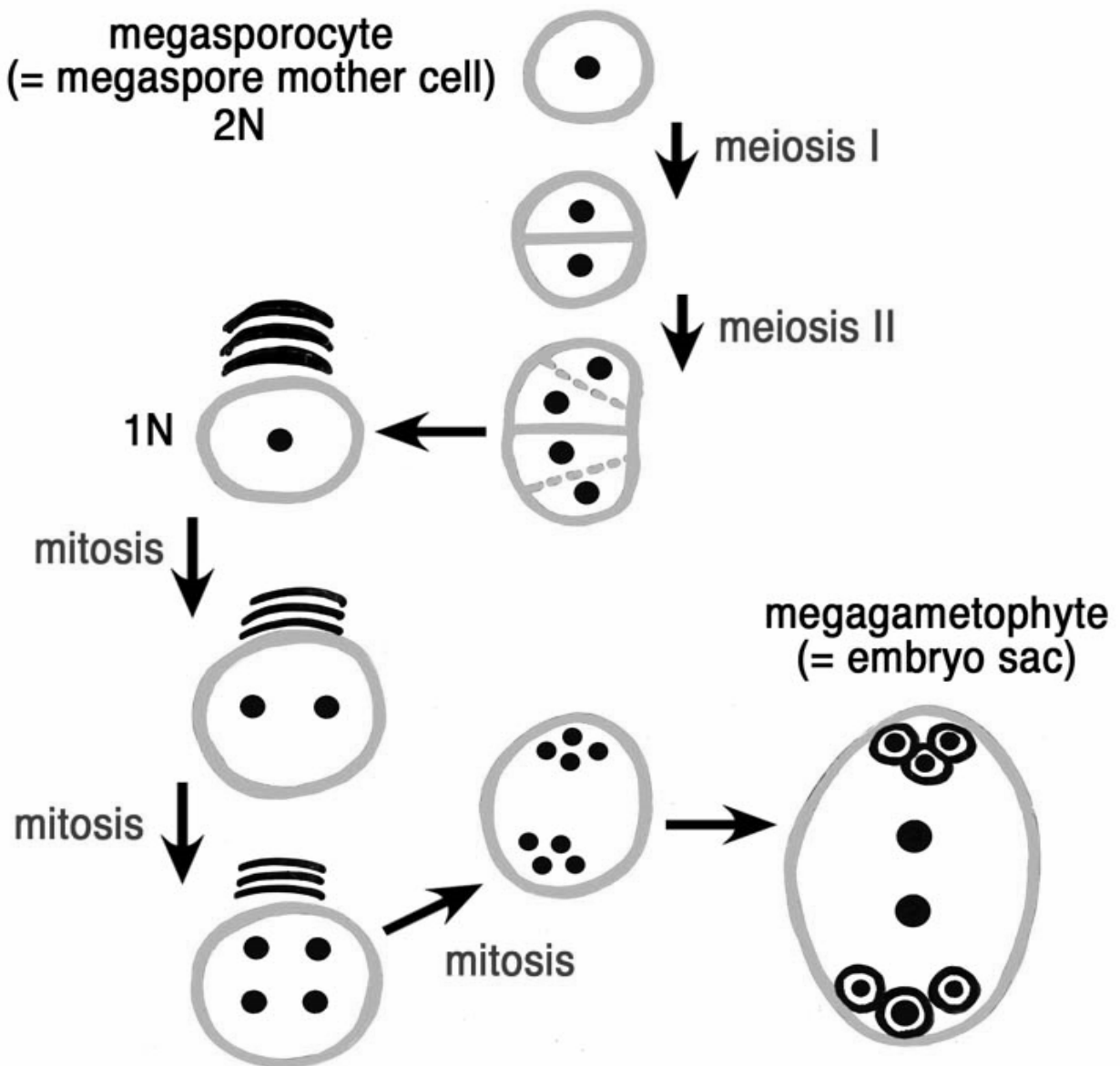
Desarrollo del grano de polen

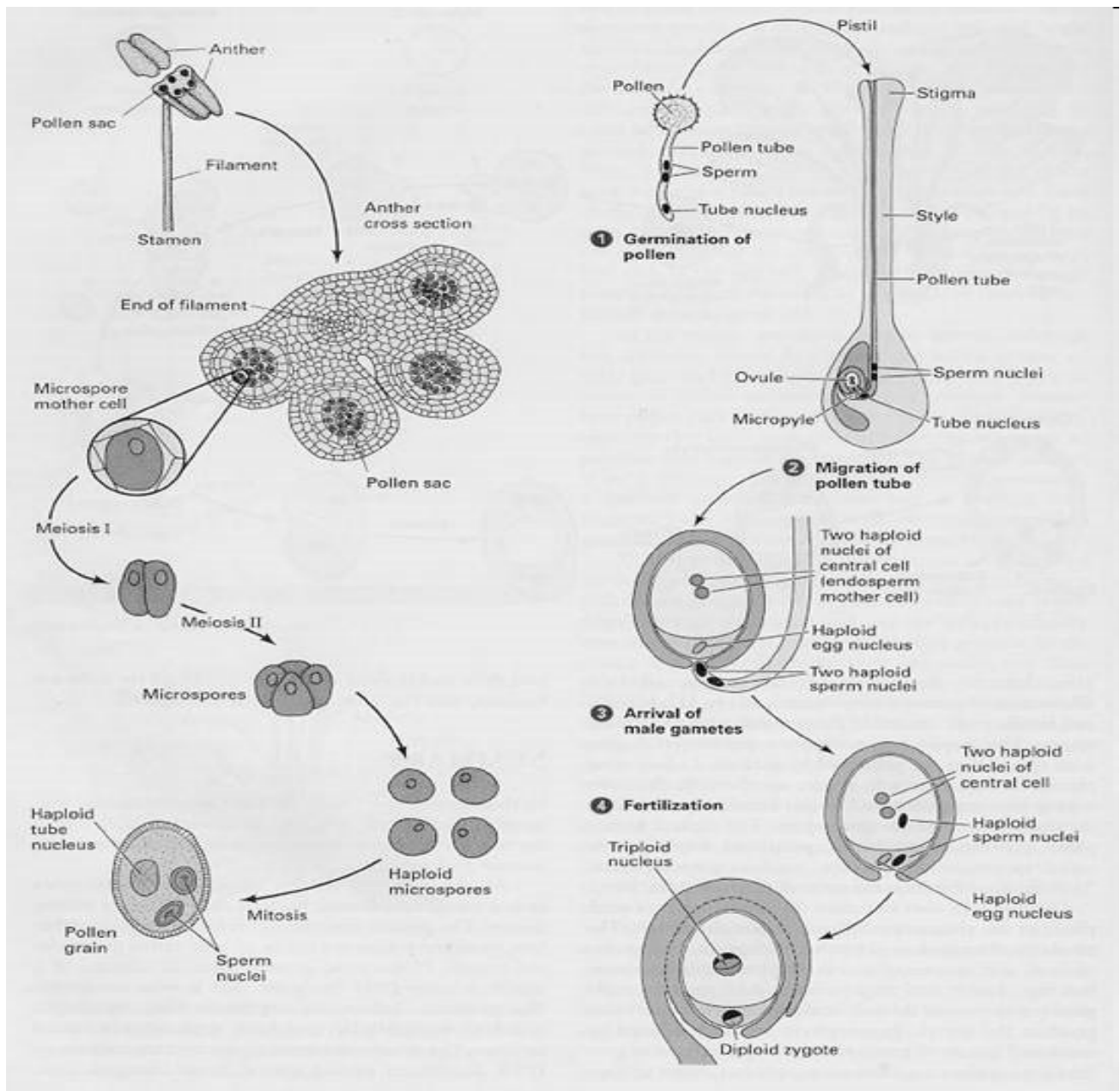




<http://genetics.sjtu.edu.cn/genetics/2.02.files/image004.jpg>

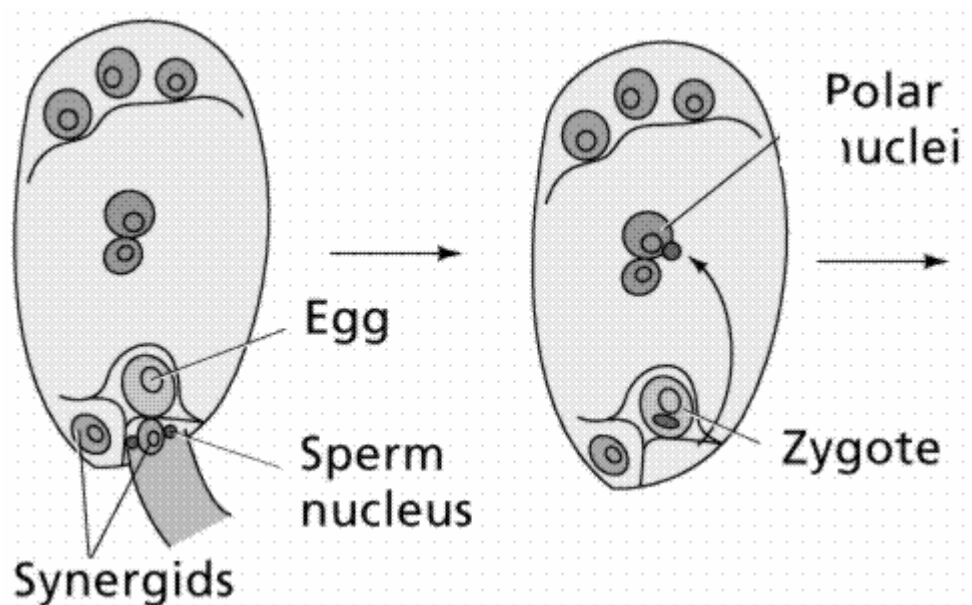
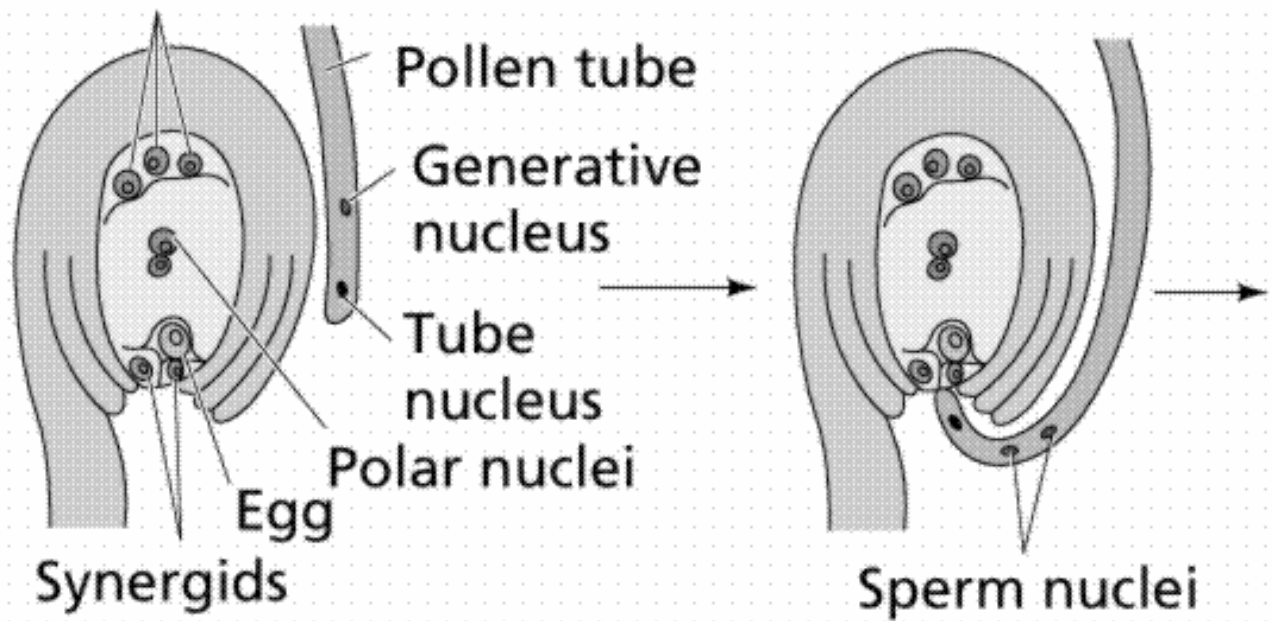
megasporocyte
(= megaspore mother cell)
 $2N$

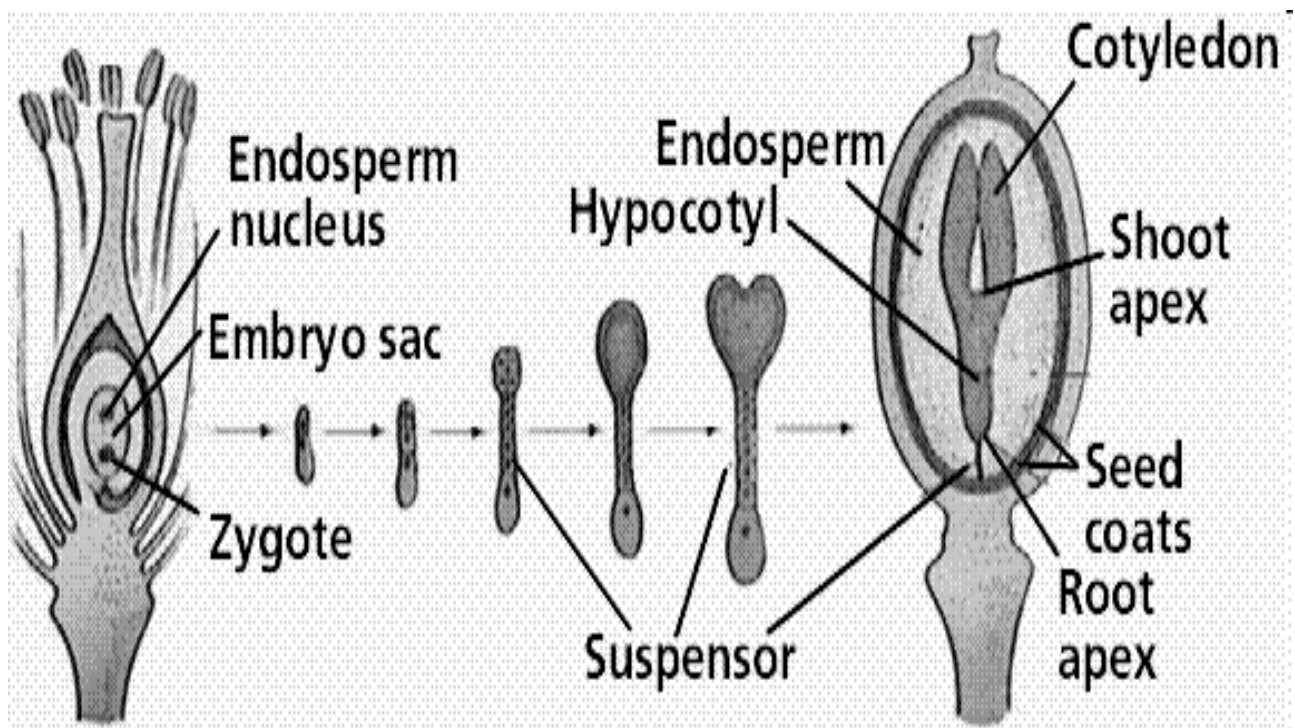




<http://genetics.sjtu.edu.cn/genetics/2.02.files/image007.jpg>

Three antipodal cells





<http://www.emc.maricopa.edu/faculty/farabee/BIOBK/seeddevel.gif>

