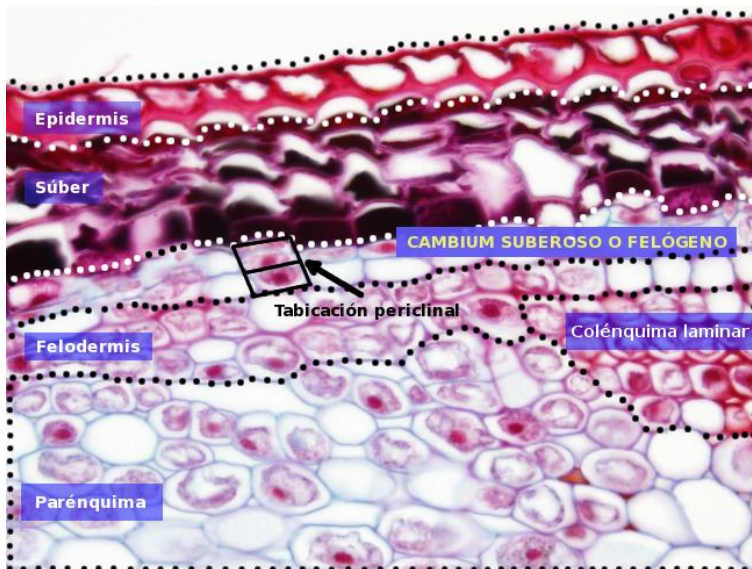
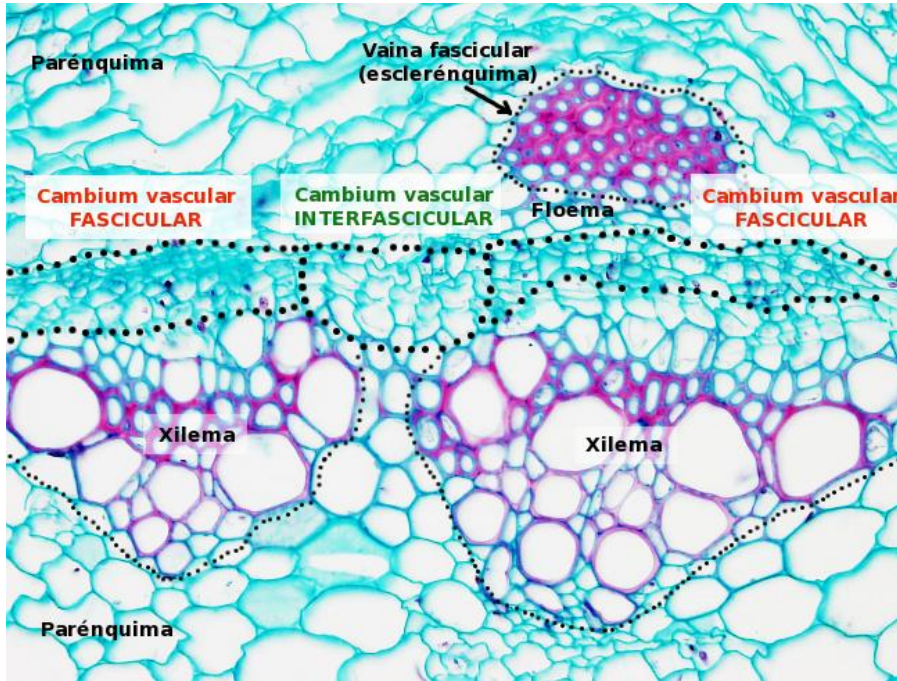
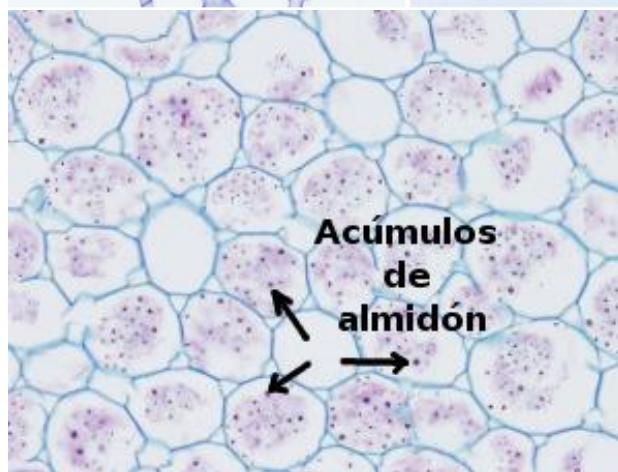
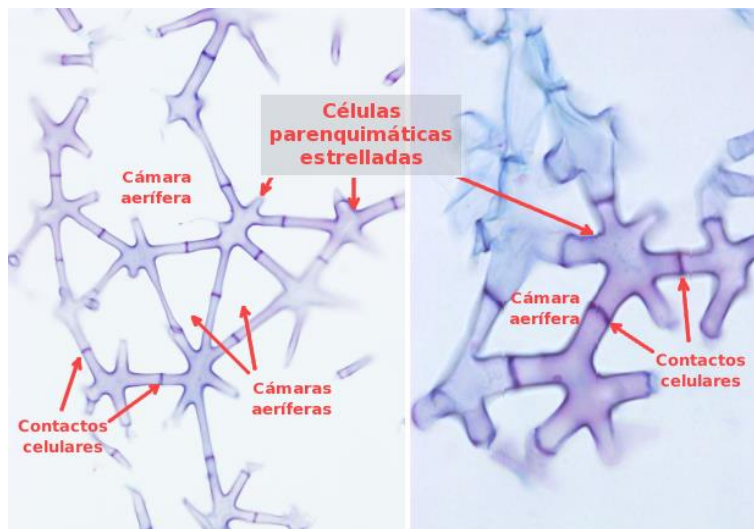


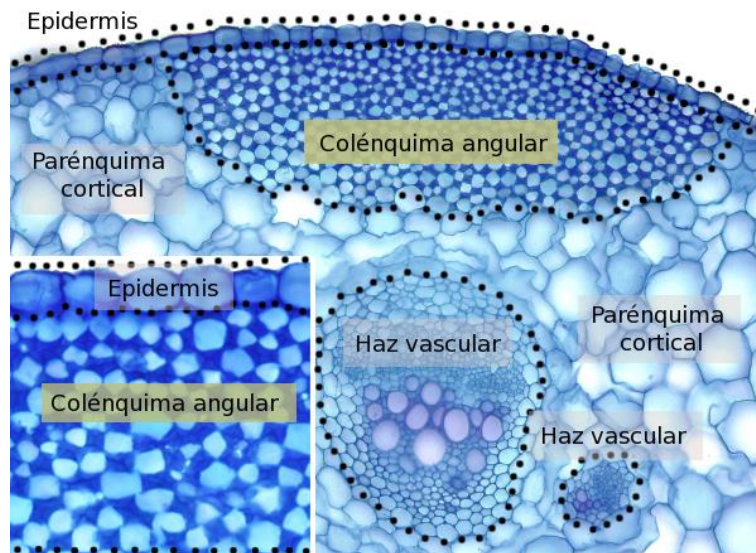
1 - MERISTEMAS



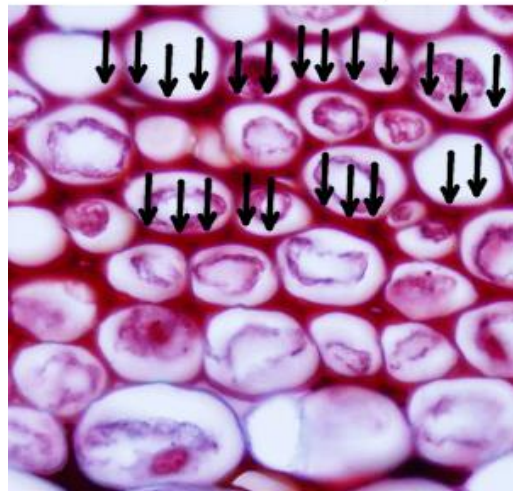
2. PARÉNQUIMA

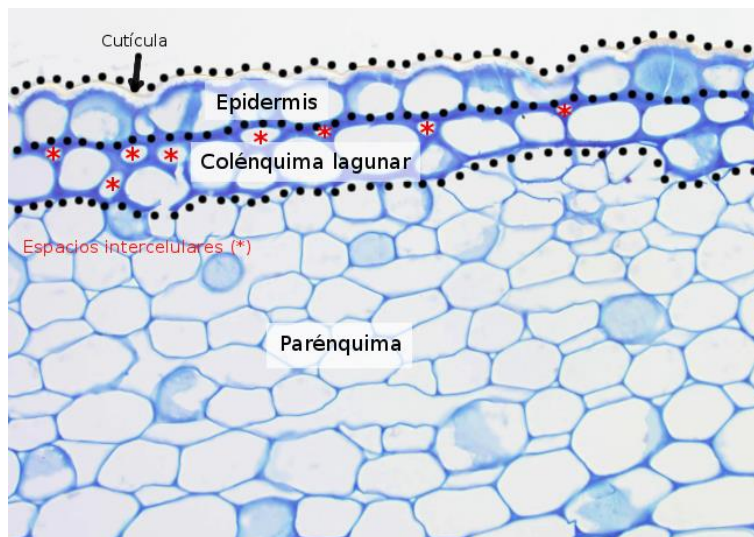
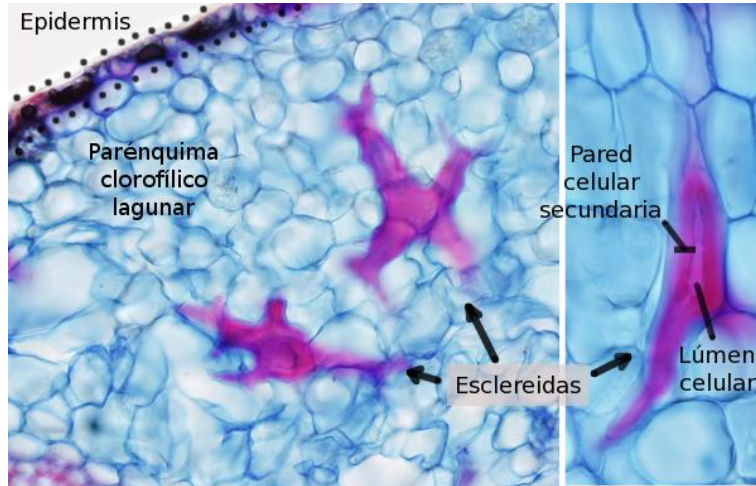


3. TEJIDOS de SOTÉN

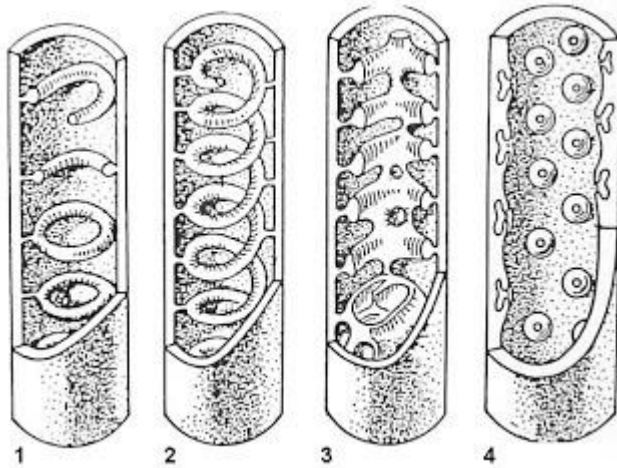


Paredes tangenciales engrosadas de las células del colénquima

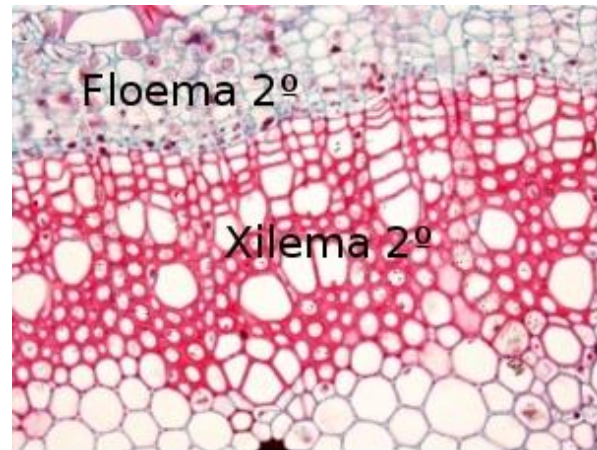
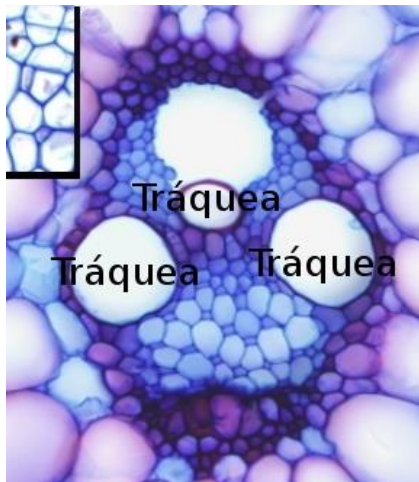




4. TEJIDOS CONDUCTORES



tipos de engrosamiento del xilema primario: 1-anular, 2-helicoidal, 3-reticular, 4-foraminado

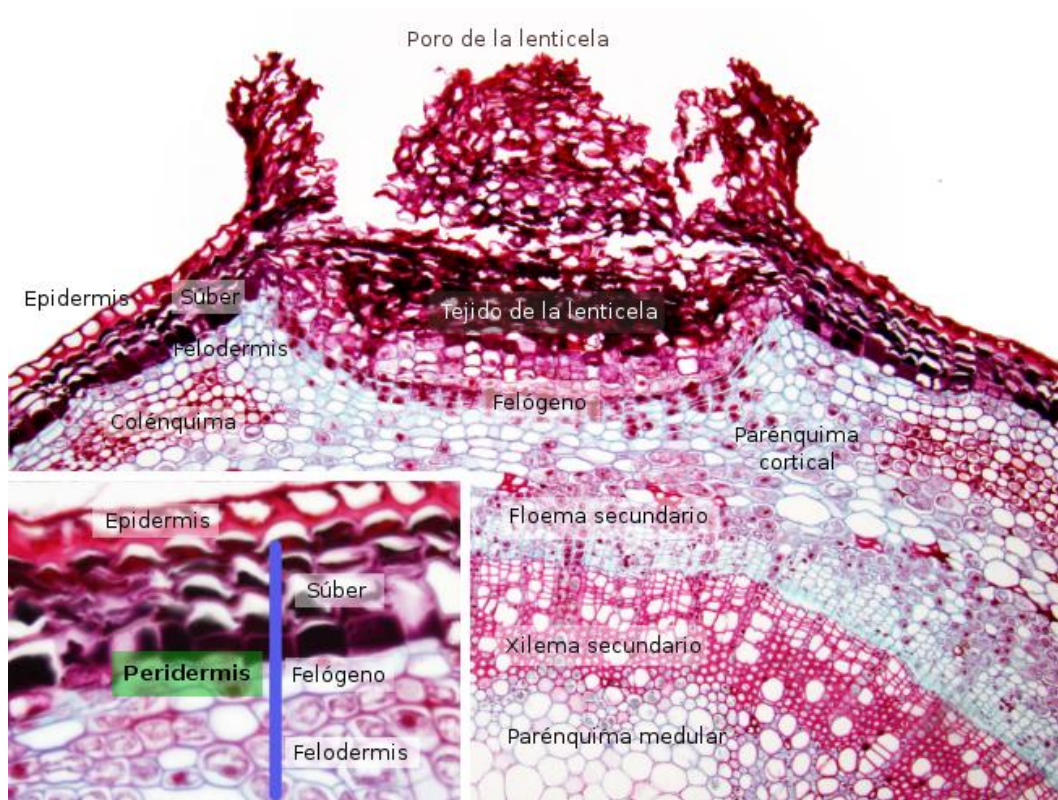
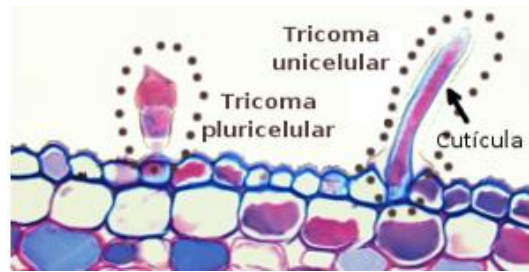


5. TEJIDOS de PROTECCIÓN

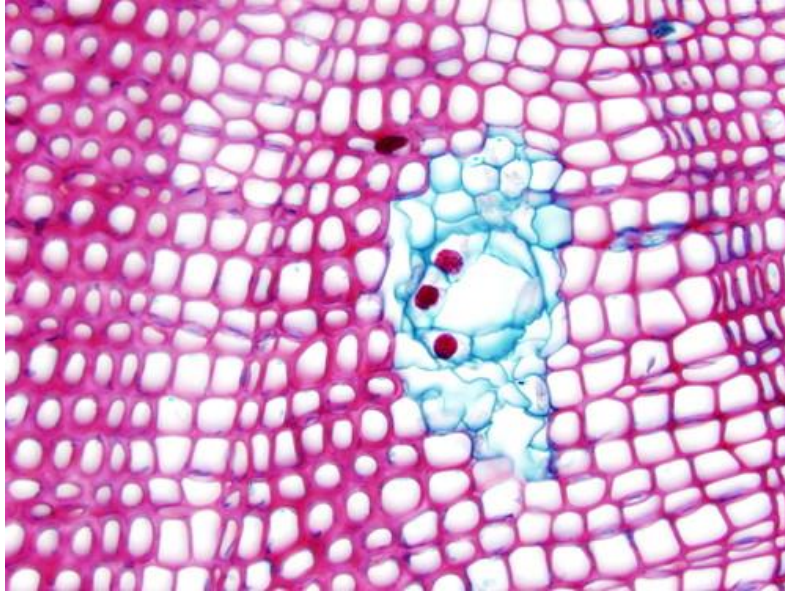


CUTICULA

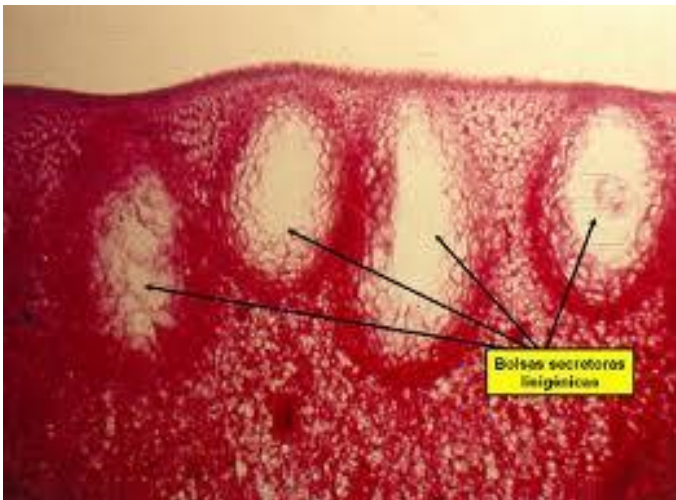




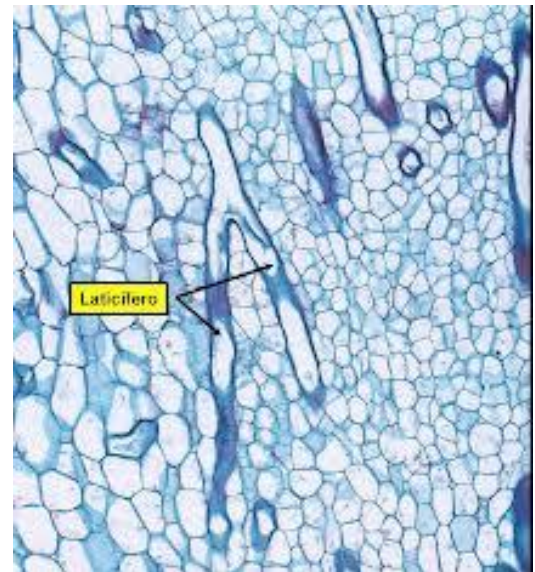
6. TEJIDOS de SECRECIÓN o GLANDULARES



Canal resinífero



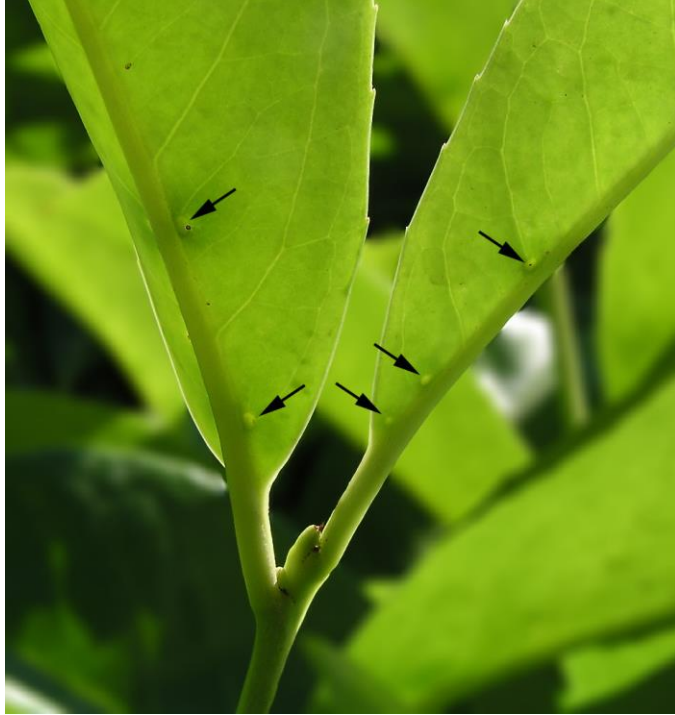
cavidades lisígenas



laticíferos



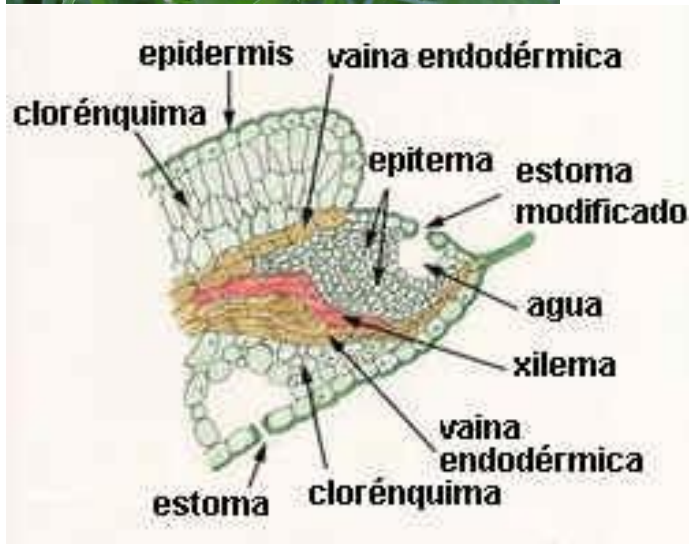
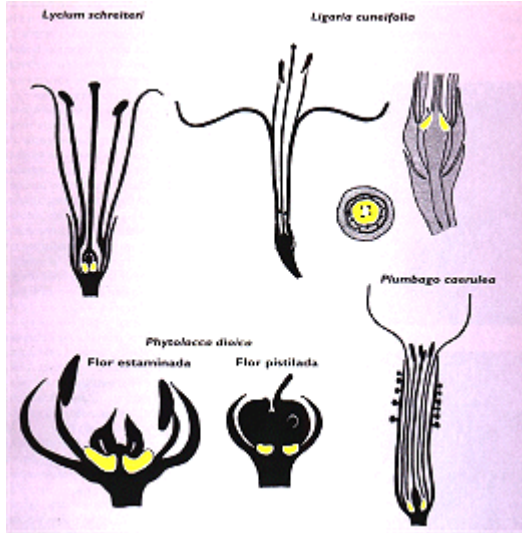
Nectarios extraflorales



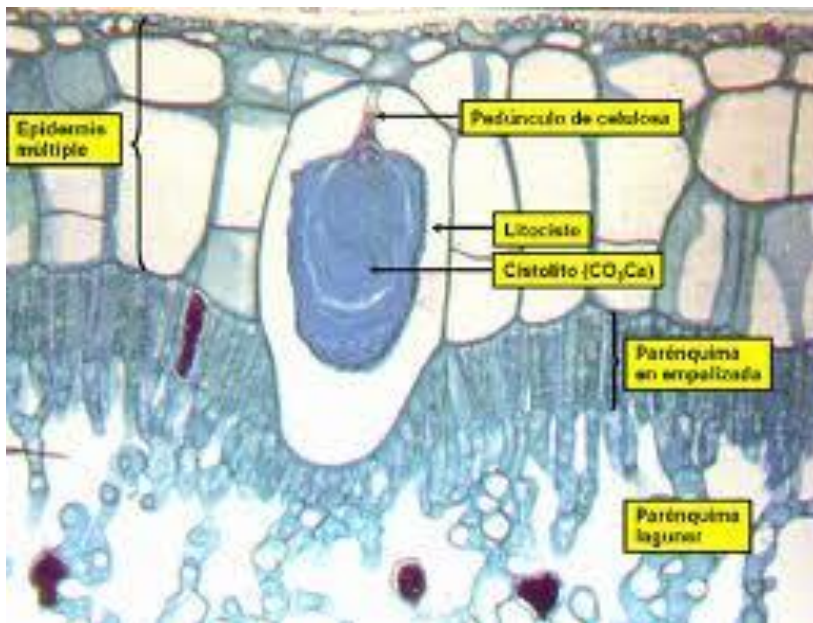
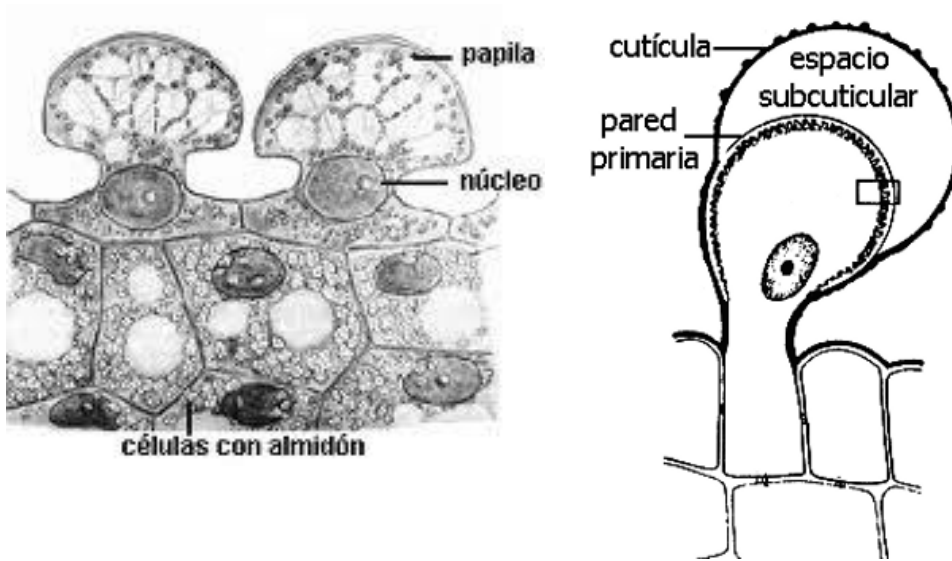
Nectarios extraflorales



Nectarios florales



OSMOFOROS



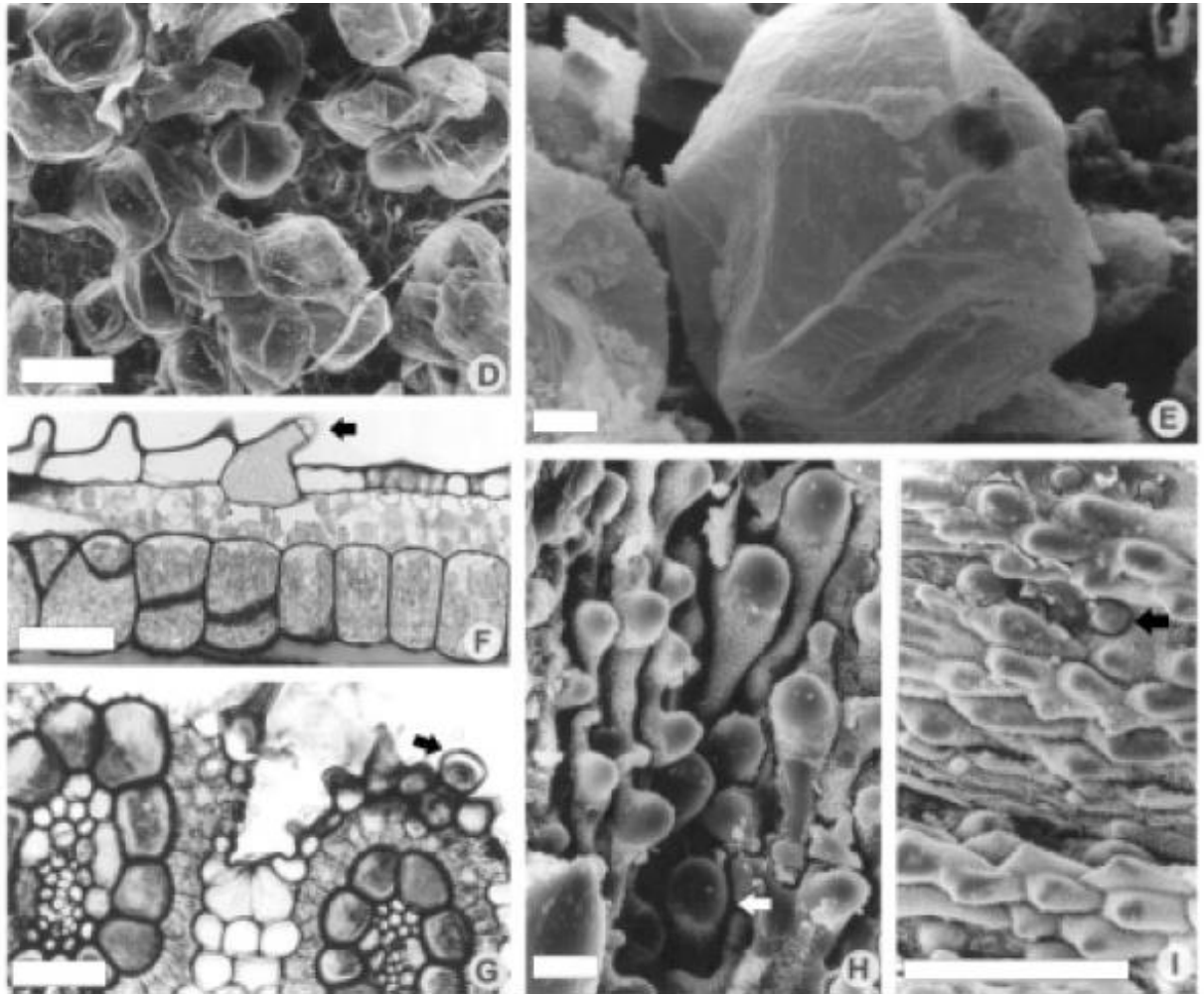


Fig. 6. Cristales y glándulas de sal. A-C: cristales, A, prismas de oxalato de magnesio en vasos del xilema de la hoja de *Atriplex hastata*, MEB; B, prismas de oxalato de magnesio en hoja de *Chenopodium macrospermum*, MEB; C, drusa de oxalato de calcio en hoja de *Atriplex hastata*, MEB; D-I: glándulas de sal, D, vista superficial de hoja de *Chenopodium macrospermum*, MEB; E, vista superficial de hoja de *Atriplex hastata*, detalle de glándula de sal, MEB; F, Corte longitudinal (C.L.) de hoja de *Diplachne uninervia*, MO; G, C.T. de hoja de *Distichlis scoparia*, MO; H, vista superficial de hoja de *Diplachne uninervia*, MEB; I, vista superficial de hoja de *Echinochloa crus-galli*, MEB. Escalas: A-C, E, H = 10 μ m; F, G = 25 μ m.

Este documento es una edición en pdf del sitio
<http://webs.uvigo.es/mmegias/inicio.html>.